

## Agriculture &amp; Natural Resources Newsletter



Harrison County Office  
668 New Lair Road  
Cynthiana, KY 41031  
P: 859-234-5510  
harrison.ca.uky.edu

# The Old Farmhand: Part II

## September 2025



*Jessica Barnes*  
Jessica Barnes,  
County Extension Agent For Ag.  
& Natural Resources Education

### A Note from Jessica

Harvest season and one of my favorite times of the year is upon us and I hope that each of you have a safe and bountiful harvest this fall! There is a lot going on in the farming community this time of year as well as at the Extension Office. Please review this newsletter as there are several upcoming events and classes to take part in.

As always if you have any questions or would like to see a class offered, please feel free to reach out and we can talk about it! I look forward to seeing several of you at the upcoming field day detailed below!

## *Harrison County* **FARM FIELD DAY**

Call 859-234-5510 to RSVP for the meal provided by the  
Harrison County Beef Cattle Association



**TUESDAY, SEPTEMBER 16**  
**4:30 pm**

**McDowell Trust Farm**  
2188 KY Hwy 353  
Cynthiana, KY 41031  
Travel out Russell Cave from  
62 West and follow the signs!

This farm field day will  
highlight each of the farmers  
that have a tract on the  
McDowell Trust Farm and  
showcase their operations.

### Cooperative Extension Service

Agriculture and Natural Resources  
Family and Consumer Sciences  
4-H Youth Development  
Community and Economic Development

### MARTIN-GATTON COLLEGE OF AGRICULTURE, FOOD AND ENVIRONMENT

Educational programs of Kentucky Cooperative Extension serve all people regardless of economic or social status and will not discriminate on the basis of race, color, ethnic origin, national origin, creed, religion, political belief, sex, sexual orientation, gender identity, gender expression, pregnancy, marital status, genetic information, age, veteran status, physical or mental disability or reprisal or retaliation for prior civil rights activity. Reasonable accommodation of disability may be available with prior notice. Program information may be made available in languages other than English. University of Kentucky, Kentucky State University, U.S. Department of Agriculture, and Kentucky Counties, Cooperating. Lexington, KY 40506



Disabilities  
accommodated  
with prior notification.



## Controlling Pasture Weeds

This is the time of year that I receive several phone calls on what to spray pastures with to help control some of the weeds. Below is a chart from one of our UK Extension Publications that is very helpful when trying to decide what chemicals will best control the weeds that you are fighting. As always if you have questions or need more information feel free to give me a call at the office.

### Response of Pasture Weeds to Herbicides and Mowing

Weed Species	Life Cycle <sup>1</sup>	Preferred Time for Herbicide Treatment <sup>2</sup>	2,4-D (various products)	dicamba (Clarity, etc.)	dicamba + 2,4-D (Weedmaster etc.)	Crossbow	PastureGard	DuraCor	GrazonNext	Chaparral <sup>3</sup>	metasulfuron <sup>3</sup> (MSM60, Patriot, etc.)	Sharpen	MOWING <sup>4</sup>
Amaranth, Spiny (Pigweed)	A	May-July	F/G	F/G	G	G	F/G	G	G	G	G	-	X
Aster spp. (White Heath Aster)	A	July-Sept	F/G	G	G	G	-	-	-	-	F	P	R
Burdock, Common	B	Feb-Mar	G	F	G	G	G	G	G	G	F	P	R
Buttercup spp.	A	Feb-Mar	G	F/G	G	G	F	G	G	G	G	P/F	X
Carrot, Wild (Queen Anne's Lace)	B	May-June	F/G	F/G	F/G	F/G	F	G	G	G	G	P	R
Chickweed, Common	A	Nov or Feb-Mar	P	F/G	G	F	G	G	G	G	G	P/F	X
Chicory	P	Feb-Mar or Aug-Nov	F/G	F/G	G	G	G	G	G	G	F/G	P	R
Clover, White	P	May-Aug	F	G	G	G	G	G	G	G	G	P	X
Cocklebur, Common	A	May-July	G	G	G	G	G	G	G	G	G	G	R
Dandelion	P	Oct-Nov or Mar-Apr	G	G	G	G	F/G	G	G	G	G	P	X
Deadnettle, Purple	A	Feb-Mar	P	F/G	G	F	G	G	G	G	G	-	X
Dock, Curly or Broadleaf	P	Feb-Apr	P/F	F	F/G	G	F/G	G	G	G	G	P	X
Dogbane, Hemp	P	May-Aug	P/F	F	F	G	G	P/F	P/F	P/F	P	P	S
Garlic, Wild	P	Nov or Mar-Apr	F	F	F	F	P	F	F	F/G	G	P	X
Goldenrod spp.	P	June-Aug	F	F/G	F/G	G	F	F	F/G	F/G	P	P	S
Hemlock, Poison	B	Nov or Mar-Apr	F/G	F/G	F/G	F/G	P	F/G	F/G	-	F	P	R
Henbit	A	Feb-Mar	P	F/G	G	F	F/G	G	G	G	G	-	X
Horsenettle	P	July-Aug	P	P/F	F	F	P/F	G	G	F/G	F	P	X
Ironweed, Tall	P	June-Aug	P	F	F	G	G	G	G	G	P	P	S
Jimsonweed	A	May-July	F	G	G	G	-	G	G	G	-	-	R
Lespedeza, Sericea	P	June-July	P	P/F	P/F	G	G	P/F	P/F	F/G	F/G	P	X
Marshelder (Sumpweed)	A	May-July	F/G	F/G	G	G	F	G	G	G	F	-	R
Milkweed, Common	P	July-Sept	P	F	P/F	F	P/F	P/F	P/F	P/F	P	P	S
Mint, Perilla	A	May-July	F	F	F/G	G	F/G	G	G	G	-	-	S
Multiflora Rose	P	Apr-June or Sept	P	P	F	G	G	F	F	F/G	G	P	X
Passionflower, Maypop	P	May-July	P	P	P	P/F	F	P	P	P	-	P	X
Plantain, Broadleaf or Buckhorn	P	Oct-Nov or Mar-Apr	F/G	F	F/G	G	F	G	F/G	F/G	F/G	P	X
Pokeweed, Common	P	May-July	F	F/G	F/G	F/G	P	F/G	F/G	F	P	P	S
Ragweed, Common	A	May-July	F/G	G	G	G	G	G	G	G	P	G	R
Ragweed, Lanceleaf	A	May-July	F/G	G	G	G	-	G	G	-	P	-	R
Sida, Arrowleaf	A	May-July	P	P	P	-	-	F	F	F	-	-	R
Sneezeweed, Bitter	A	May-July	F/G	F/G	G	G	G	G	G	G	-	-	R
Sorrel, Red (Sheep Sorrel)	P	Sept-Nov or Mar	P	F	F/G	F/G	F	-	-	F/G	F/G	P	X
Spurge, Nodding	A	June-July	P	P	P	P/F	-	P/F	P/F	G	G	-	R
Thistle, Bull	B	Oct-Nov or Feb-Mar	G	G	G	G	F/G	G	G	G	F/G	P	R
Thistle, Canada	P	Prebud or Oct-Nov	P	P/F	F	F	P/F	G	G	G	F	P	S
Thistle, Musk	B	Oct-Nov or Feb-Mar	G	G	G	G	F/G	G	G	G	F/G	P	R
Thistle, Plumeless	B	Oct-Nov or Feb-Mar	G	G	G	G	F/G	G	G	G	F/G	P	R
Tickclover (Desmodium spp.)	P	June-Aug	P	-	F	F/G	F/G	F/G	F/G	-	-	P	R
Trumpet creeper	P	Aug-Sept	P	P	P/F	F	F	P	P	-	P	P	X

Control: G = Good or Excellent; F = Fair (suppression or partial control); P = Poor; - = No Information

<sup>1</sup> Life Cycle: A = Annuals; P = Perennials; B = Biennials

<sup>2</sup> The preferred time for herbicide treatment will depend on environmental conditions and other factors.

<sup>3</sup> May cause temporary yellowing, stunting and seedhead suppression of tall fescue (consult label). Metasulfuron is an active ingredient in several products (e.g. Chaparral, MSM60, Patriot, Purestand).

<sup>4</sup> Mowing: R = Timely mowing reduces top growth and seed production; S = Suppression of top growth; X = Not very effective

**Note:** This table should be used only as a guide for comparing the relative effectiveness of herbicides to a particular weed. The herbicide may perform better or worse than indicated in the table depending on the species, weed size, time of application, and/or extreme weather conditions. Consult herbicide label for weed height or growth stage and product amount. Read and follow all label directions and precautions before herbicide application.

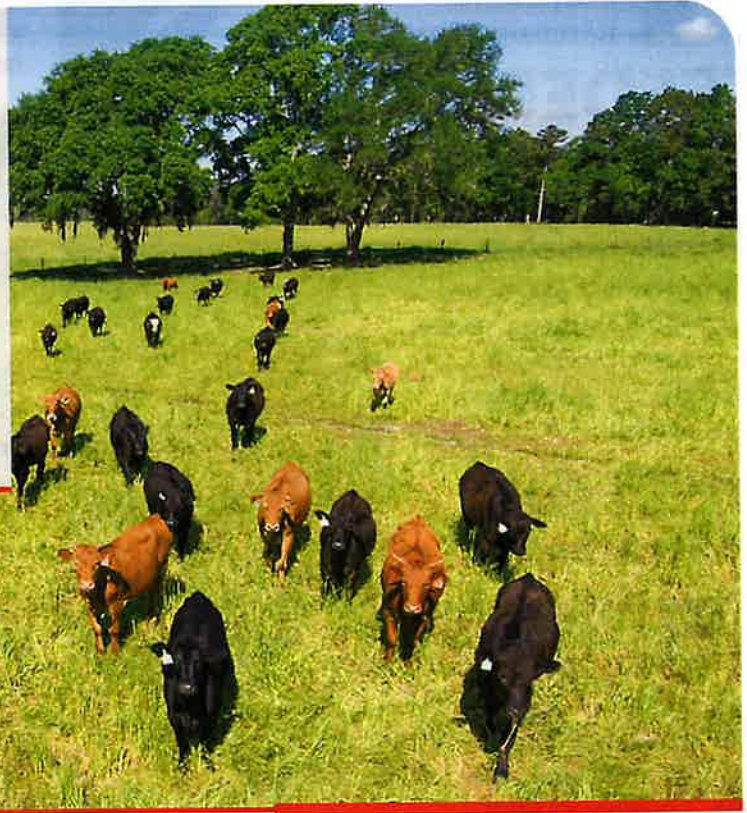
Adapted from *Weed Management in Grass Pastures, Hayfields, and Other Farmstead Sites* (AGR-172; revised 3-2021). Available at <http://www2.ca.uky.edu/agcomm/pubs/agr/agr172/agr172.pdf>.

Listing of pesticide products implies no endorsement by the University of Kentucky or its representatives. Criticism of products not listed is neither implied nor intended.



# SURVIVING HIGH PRICES\$

## WEBINAR SERIES



**WEDNESDAYS: 2-3 P.M. ET | 1-2 P.M. CT | 12-2 P.M. MT | 11-12 P.M. PT**

Join us for a 6-week series to learn about & discuss the uniqueness of the current cattle cycle so we can better understand how to help our producers manage their operations through record-high prices!

Speakers will include Extension economists and specialists from across the United States.

DATES	TOPICS
September 10	Industry Margins & Beef Demand
September 17	Differences in this Cattle Cycle & Import Dynamics
October 1	Risk Management & What To Do With Profits
October 8	Operation Resiliency & Contract Grazing
October 22	Integrated Crop-Livestock Systems & How Not to Need a Hay Baler
October 29	Defining "Better Genetics" & Economics of Reproduction Strategies

Visit this link or scan the QR Code to register: [bit.ly/register-for-SHPwebinar](https://bit.ly/register-for-SHPwebinar)



**UF** IFAS Extension  
UNIVERSITY OF FLORIDA

**MS** MISSISSIPPI STATE UNIVERSITY  
EXTENSION

**OSU** EXTENSION

**COOPERATIVE EXTENSION**  
UNIVERSITY OF CALIFORNIA

**UTIA** INSTITUTE OF AGRICULTURE  
THE UNIVERSITY OF TENNESSEE

**UK** Martin-Gatton  
College of Agriculture,  
Food and Environment  
Cooperative Extension Service

**extension**  
ILLINOIS AND A KANSAS UNIVERSITY

**UNIVERSITY OF ARKANSAS**

**TEXAS A&M**  
AGRI LIFE  
EXTENSION

The University of Florida is an Equal Opportunity Institution. The University of Florida is committed to providing universal access to all of our events. For disability accommodations such as sign language interpreters and listening devices, please contact Hannah Baker, [h.baker@ufl.edu](mailto:h.baker@ufl.edu), 863-374-7051 at least 2 week in advance. Advance notice is necessary to arrange for some accessibility needs.



**UK** Cooperative  
Extension Service

# FEEDER CALF GRADING SCHOOL


Join us for an engaging feeder calf program where you will gain experience in grading and evaluating feeder calves. Learn key strategies to improve your marketing success and maximize profits.

**REGISTER NOW**

**September 8<sup>th</sup>**

6:00pm at Bluegrass Stockyards  
Please RSVP by Friday August 29<sup>th</sup>  
FOR MORE INFORMATION OR TO RSVP

 Call your county  
Extension Office

 4561 Iron Works Pike,  
Lexington, KY 40511

**S&B**

Event sponsor: **CATTLE CO.**

Cooperative  
Extension Service

MARTIN GATTON COLLEGE OF AGRICULTURE, FOOD AND ENVIRONMENT



# All About Goats! Webinar

JOIN EXTENSION AND INDUSTRY PROFESSIONALS FOR THE FALL 2025 SERIES



## Goat Health and Care Sept. 22

During this session, Extension Specialist, Dr. Brady Campbell, will review proper care for goats of all ages and explain how to help keep them healthy and continue production.

## Farm Business and Management Oct. 6

Extension Specialist, Eric Richer, and Extension Educator, Pressley Buurma, will help guide participants in farm management strategies and provide options for enterprise budgeting and record keeping as it relates to goat production.

## Goat Processing Oct. 20

Throughout this presentation, Extension Specialist, Dr. Lyda Garcia, will explain the cuts of a carcass and how to process a goat at home.

## Livestock Marketing Nov. 3

Join us as Extension Specialist, Garth Ruff, discusses the ins and outs of the goat market. He will also discuss how to market goats to fill the current wants and needs of the customers.

## Hay and Grain Production Nov. 17

Throughout this session, Extension Educator, Jordan Penrose, will present tips and tricks on hay and grain production for goats as well as what type of crops would work best for your production system.

## Coyote Management Dec. 1

This session is going to focus on how to manage interactions between coyotes and goats. Experts will also explain the current status of coyote research in Ohio.

## Open Forum: Ask Me Anything Dec. 15

Have a burning question that was not answered during one of our past webinar sessions? Join Extension Educators and Specialists to get your questions answered!

Webinars are hosted via Zoom  
(7-8 p.m. EST). Register at:

[go.osu.edu/allaboutgoats25](https://go.osu.edu/allaboutgoats25)

**O**  
**THE OHIO STATE**  
**UNIVERSITY**  
EXTENSION

Ohio State University Extension is part of The Ohio State University College of Food, Agricultural, and Environmental Sciences  
CFAES provides research and related educational programs to clientele on a nondiscriminatory basis. For more information, visit [cfaes.osu.edu/hondsemination](https://cfaes.osu.edu/hondsemination). For an accessible format of this publication, visit [cfaes.osu.edu/accessible](https://cfaes.osu.edu/accessible).

# 2025 Horses & Horsemen:

Farm & Facilities Expo



**Tuesday, September 16<sup>th</sup>**

RSVP to Bourbon County Extension Office: 859-987-1895

## Schedule:

5:00: Registration and Trade Fair

6:00: Dinner

6:15: Welcome & Farm Overview

Arena footing and maintenance - Dr. Coleman, UK Equine Extension Specialist

Pasture Walk - Central KY ANR Agents

Heavy Use Areas & Farm Infrastructure - Dr. Bob Coleman

Horsemanship Demo - Mike & Chris Stokley

**Location:**  
Mike & Chris Stokley

**Big Creek Livestock**  
1310 Thatchers Mill Rd  
Paris, KY 40361



College of Agriculture,  
Food and Environment  
Cooperative Extension Service



University of  
Kentucky  
Ag Equine Programs  
College of Agriculture, Food and Environment

Cooperative  
Extension Service

MARTIN GATTON COLLEGE OF AGRICULTURE, FOOD AND ENVIRONMENT



# 2025 CENTRAL KENTUCKY HAY IMPROVEMENT PROGRAM

Testing provides nutritional value of hay to assist in balancing rations, and can result in reduced feed cost, increased animal performance, and information to improve forage stands.

Free analysis to determine hay quality and livestock needs.

Call your local  
Extension Office to  
sign up.



Martin-Gatton  
College of Agriculture,  
Food and Environment

**DEADLINE TO REGISTER:**  
**September 29**





**BEEF BASH**  
*Save the Date*

**SEPTEMBER 20, 2025**  
**9:00 AM - 3:30 PM**  
**C. ORAN LITTLE RESEARCH FARM**

 Cooperative Extension Service

 Cooperative Extension Service

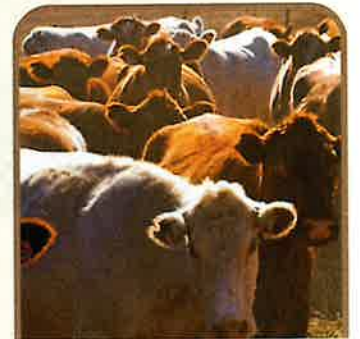
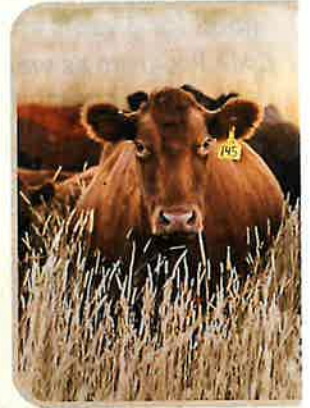
## Proactive Pinkeye Management in Cattle


Pinkeye (IBK) is a major, costly disease for beef producers, quickly spreading and causing issues like reduced weaning weights and sale discounts. **Early risk reduction is vital.**

### Pinkeye Prevention Strategies:

- Ensure good nutrition (trace minerals) and clean water.
- Minimize dust and UV exposure.
- Use IGRs, ear tags, dust bags, and back rubbers.
- Promptly treat symptoms with vet-prescribed antibiotics and isolate.
- Use commercial or custom vaccines 4-6 weeks pre-season, with boosters.

Contact your local county extension office for more information



 **Harrison County Cooperative Extension—Agriculture**

**Dead Animal Removal Service**  
**859-421-1867**

*Community Corner*

**Spanish Resources**



**CHAMBER OF COMMERCE**

**MCTC**



**LIBRARY**



**HC EXTENSION**



Check out what's happening in our community!  
Use your smart phone camera to scan the QR codes to be directed to the organization's separate website.



## Beef Quality and Care Assurance (BQCA) Trainings

I will be holding two BQCA trainings on Thursday, September 25 at 10 am and 6 pm. These certifications are good for 3 years and are necessary if you sell in CPH-45 sales, utilize the Large Animal Incentive Area of the CAIP Program as well as a few other things. If you are interested in attending on of these sessions please give us a call at 859-234-5510 to register so we have enough exams and materials ready for each session. If you are unsure if your certification has expired or not you are welcome to give us a call and we can look that up for you.



## Pumpkin Apple Muffins

**1½ cups** all-purpose flour  
**1½ cups** whole-wheat flour  
**1½ teaspoons** baking soda  
**½ teaspoon** salt  
**1½ teaspoons** ground cinnamon

**½ teaspoon** ground ginger  
**½ teaspoon** ground nutmeg  
**1¼ cups** honey  
**2 large** eggs

**1½ cups** fresh pureed pumpkin  
**½ cup** canola oil  
**2 cups** Granny Smith apples, finely chopped

**Preheat** oven to 325 degrees F. In a large bowl, **combine** flours, baking soda, salt and spices. In a small bowl, **combine** honey, eggs, pumpkin and oil; **stir** into dry ingredients just until moistened. **Fold** in apples. **Fill** greased or paper lined muffin cups, **two-thirds full**. **Bake** for 25 to 30 minutes or until muffins test done. **Cool** for 10 minutes before removing from pan.

**Note:** Can substitute two cups granulated sugar for honey, decrease baking soda by ¼ teaspoon and increase oven temperature to 350 degrees F.

**Yield:** 18 muffins

**Nutritional Analysis:** 200 calories, 7 g fat, 0.5 g saturated fat, 35 mg cholesterol, 160 mg sodium, 35 g carbohydrate, 2 g fiber, 20 g sugar, 3 g protein



Buying Kentucky Proud is easy. Look for the label at your grocery store, farmers' market, or roadside stand.

## Kentucky Winter Squash

**SEASON:** August through October.

**NUTRITION FACTS:** Winter squash, which includes acorn squash, butternut squash, pumpkin and other varieties, is low in fat and sodium and an excellent source of vitamin A and fiber.

**SELECTION:** Winter squash should be heavy for its size with a hard, tough rind, free of blemishes or soft spots.

**STORAGE:** Store winter squash in a cool, dry place and use within one month.

### PREPARATION:

**To Steam:** Wash and remove seeds. Cut squash into 2-inch cubes or quarter, leaving rind on. The rind will remove easily after cooking. Bring 1 inch of water to a boil in a saucepan and **place** squash on a rack or basket in the pan. Do not immerse it in water. Cover the pan tightly and steam the squash 30-40 minutes or until tender.

**To Microwave:** Wash squash and cut it lengthwise. Place in a baking dish and cover with plastic wrap. Microwave until tender, using these guidelines:

- Acorn squash: ½ squash, 5-8 minutes; 1 squash, 8½-11½ minutes.
- Butternut squash: 2 pieces, 3-4½ minutes.
- Pumpkin: 1 pound piece, 7-8 minutes.

**To Bake:** Wash squash and cut lengthwise. Smaller squash can be cut in half; larger squash should be cut into portions. Remove seeds and **place** squash in a baking dish. Bake at 400 degrees F for 1 hour or until tender. Seeds can be toasted at 350 degrees F for 20 minutes.

### KENTUCKY WINTER SQUASH

#### Kentucky Proud Project

County Extension Agents for Family and Consumer Sciences  
 University of Kentucky, Dietetics and Human Nutrition students  
 September 2013

Educational programs of Kentucky Cooperative Extension serve all people regardless of race, color, age, sex, religion, disability, or national origin. For more information, contact your county's Extension agent for Family and Consumer Sciences or visit [www.uky.edu/fcs](http://www.uky.edu/fcs)

COOPERATIVE  
 EXTENSION  
 SERVICE

**UK**  
 UNIVERSITY OF KENTUCKY  
 College of Agriculture,  
 Food and Environment

Source: [www.fruitsandveggiesmatter.gov](http://www.fruitsandveggiesmatter.gov)